



Sorting & Reuse

- Spårvägen Neighbourhood, Sorgenfri










VASYD

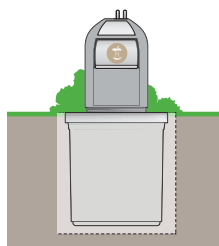
UNDERGROUND CONTAINERS

In our neighbourhood, we sort our waste in underground containers.

We have containers for:

-  newspapers
-  paper packaging
-  plastic packaging
-  metal packaging
-  clear glass
-  coloured glass
-  general waste (normal bin liners)

We also have underground containers for food waste for local businesses that lack food waste disposers. These underground containers are large enough that we need not empty them so often, which has the advantage of reducing the number of heavy vehicles where we live. The system is fire safe and minimises any odours.



FOOD WASTE DISPOSERS

Instead of collecting food waste in brown paper bags, we use food waste disposers in our kitchens to grind food waste. These food waste disposers are easy and convenient to use. Potato peelings and similar waste need never leave the sink and leftovers can simply be scraped off plates and ground after meals.

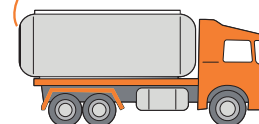
The food waste disposers in our kitchens are connected to separate waste pipes routed to a collection tank in the neighbourhood. This tank is emptied by a vacuum tanker and the food waste is transported to a biogas plant.



The food waste is converted into biogas for use as automotive fuel and the residue is converted into organic fertiliser for use in farming.



Always follow the manufacturer's instructions for the disposer. Food waste that cannot be ground is sorted as general waste.



RETUREN

- a small building for recycling and reuse

You access ReTuren with a code that is unique to your building. Here you can hand in textiles and dispose of hazardous waste, such as light bulbs, electronics, paint cans and solvents. Any smaller belongings (functioning and clean) that you no longer need but which someone else might have use for can be left on the reuse shelf. And feel free to take anything from the reuse shelf even if you have not left anything yourself!

BULKY WASTE SKIP

Once a month we collect bulky waste in a skip. Keep an eye out for details of the dates and times!

Sorting guide



General waste

Cat litter, nappies, sanitary towels, envelopes, cotton buds, tampons, dish brushes, toothbrushes, broken porcelain, cigarette ends and snus, vacuum cleaner bags, disposable razors, dish cloths, sponges, sticking plasters, corks, ballpoint pens, used candles and CDs.



Plastic packaging

Flexible and rigid plastic, styrofoam, bubble wrap, empty tablet strips, plastic bottles, plastic lids, plastic containers, mesh fruit bags, plastic trays, plastic tubes, bag-in-box bags, refill bags, soap dispensers and roll-ons.



Paper packaging

Corrugated cardboard, pasta boxes, cereal boxes, paper mugs, milk cartons, toilet roll tubes, kitchen paper tubes, egg boxes, tea packets, shoe boxes, paper plates, padded envelopes and paper bags.



Metal packaging

Tin cans, bottle caps, metal lids, metal closures, metal tubes and aluminium foil.

Sorting guide



Coloured glass

Coloured glass bottles and glass jars.



Clear glass

Clear glass bottles and glass jars.



Newspapers

Newspapers, periodicals, magazines, advertising, brochures, catalogues, writing and drawing paper and paperback books.



Hazardous waste

Spray cans, nail varnish, solvents, leftover paint and varnish.

Sorting guide



Lamps

Compact fluorescent bulbs, LED bulbs, halogen bulbs and light bulbs.



Smaller electronics

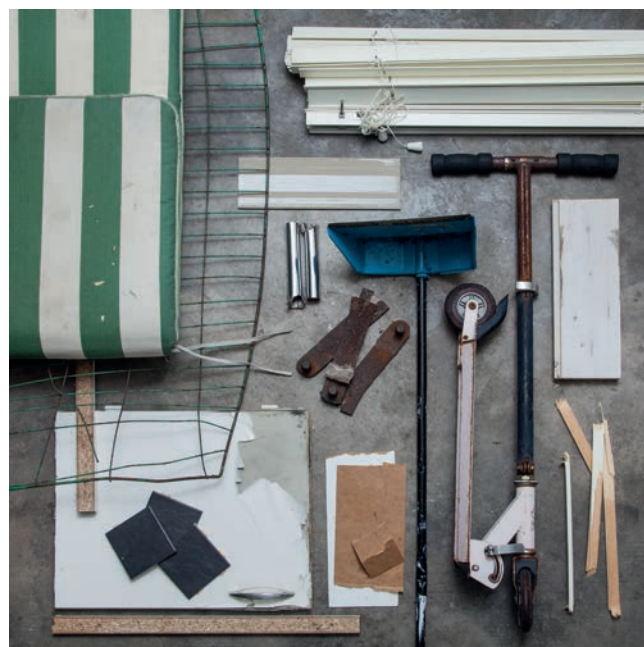


Microwaves, computers, printers, electric toothbrushes, electric razors, mobile phones, remote controls, headphones, charging cables, small battery-powered toys, smoke alarms and computer mice.



Batteries

Cylindrical batteries, rectangular batteries and button cell batteries.



Bulky waste

Bikes, furniture, mattresses and rugs.

IMPORTANT:
Only to be disposed of on a skip day.

Sorting guide



Textiles

Clothing, shoes, bedsheets, tablecloths, curtains, towels. Damaged textiles are also okay.



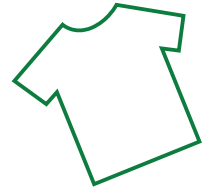
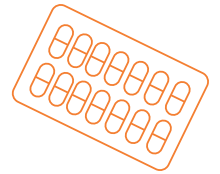
Reuse

Usable items.

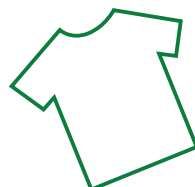
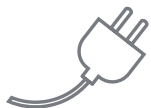
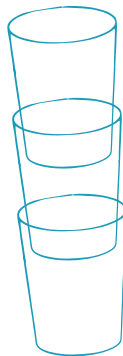
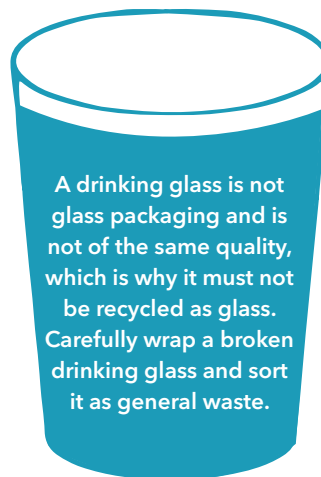
Did you know that...

Unused and old medicines are to be handed in at a pharmacy. Empty tablet strips are sorted as plastic packaging.

If you recycle a tin can, it can be used for railway tracks, engine components and reinforcing bars.



If you want to be climate smart, it is best if you can use your old garments until they are worn out or else buy second hand. The production process causes most environmental damage. Of the 13 kg of textiles the average person buys each year, 8 kg end up in general waste. Hand your old clothes in at ReTuren or sell them instead.



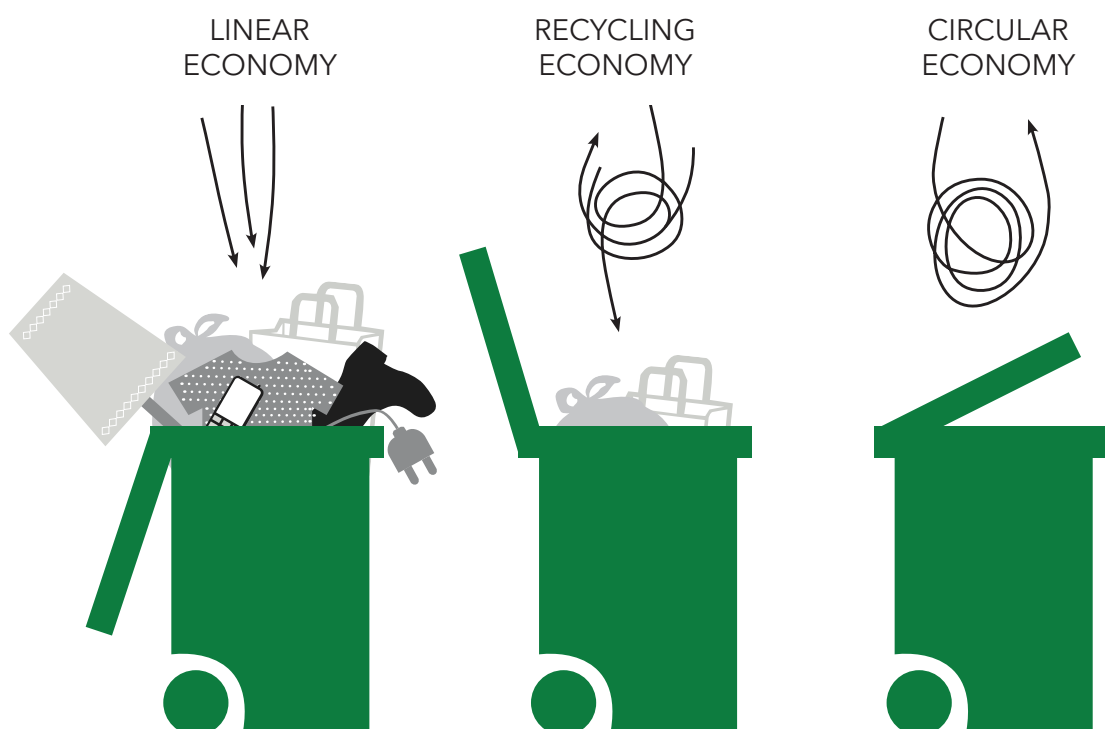
Recycle your packaging and newspapers

Today, there are boots made from bread bags, railway tracks made from bottle caps, chocolate boxes made from milk cartons and new glass bottles made from old jam jars. However, a great deal that gets thrown out as general waste could be reused many times over.

Paper can be recycled up to seven times without affecting quality.
Glass bottles, tin cans and tomato purée tubes can be recycled countless times.

We all have a responsibility for our planet's resources. Everything thrown in general waste is incinerated a single time, but waste that is recycled lives several new lives. Together, we are striving toward a circular society in which all waste is considered a resource.

Thank you for reusing and sorting, helping to turn old into new!



**WIN-WIN
ÄTERVONN!**

VASYD 